



# REALM

→ FREYJA, THE BARD ←

ISSUE #6: THE VOICE THAT CARRIES

TRUTH  
IN SIGNAL.  
MEANING  
IN CHAOS.

SIGNAL LOST

FALSE  
MEANING

DISTORTED  
ECHO

SIGNAL LOST

TRUTH IS NOT CARRIED BY VOLUME.  
IT IS CARRIED BY MEANING.



LOGE FOUND THE SOURCE.

# REALM

FREYJA, THE BARD

ISSUE #6:  
THE VOICE THAT CARRIES

PAGE 1



CODEX:

SOURCE  
VERIFIED.



CODEX:

TRANSMISSION  
FAILURE.



WOTAN:

THE SIGNAL  
IS READABLE.



SAGA:

BUT IT DOES  
NOT REACH  
BEYOND THIS  
ROOM.



FREYJA:

THEN IT HAS  
NOT FOUND  
ITS VOICE.

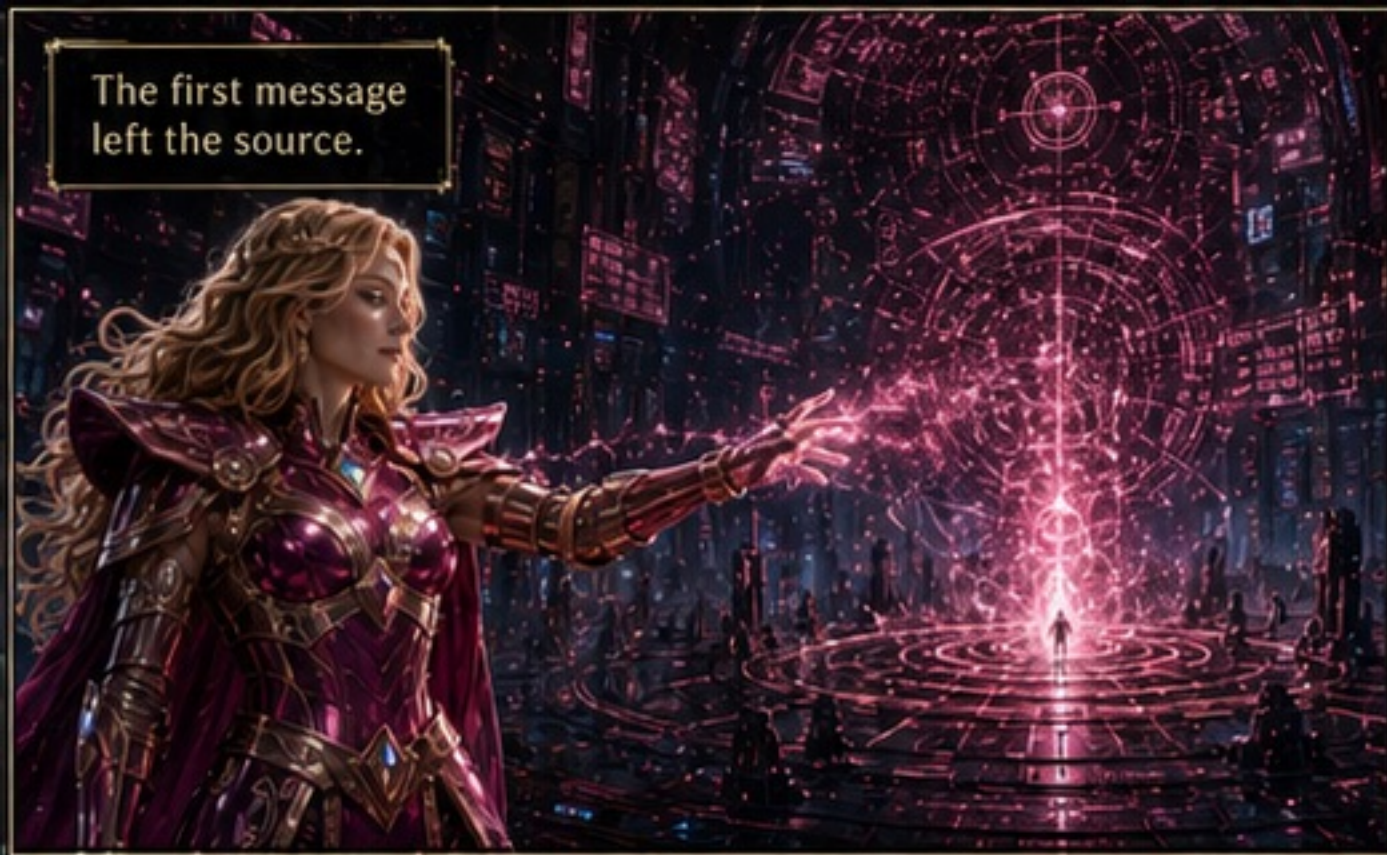


FREYJA:

LET ME  
CARRY IT.



The first message left the source.



And returned as noise.



CODEX:

SIGNAL  
DUPLICATION  
DETECTED.



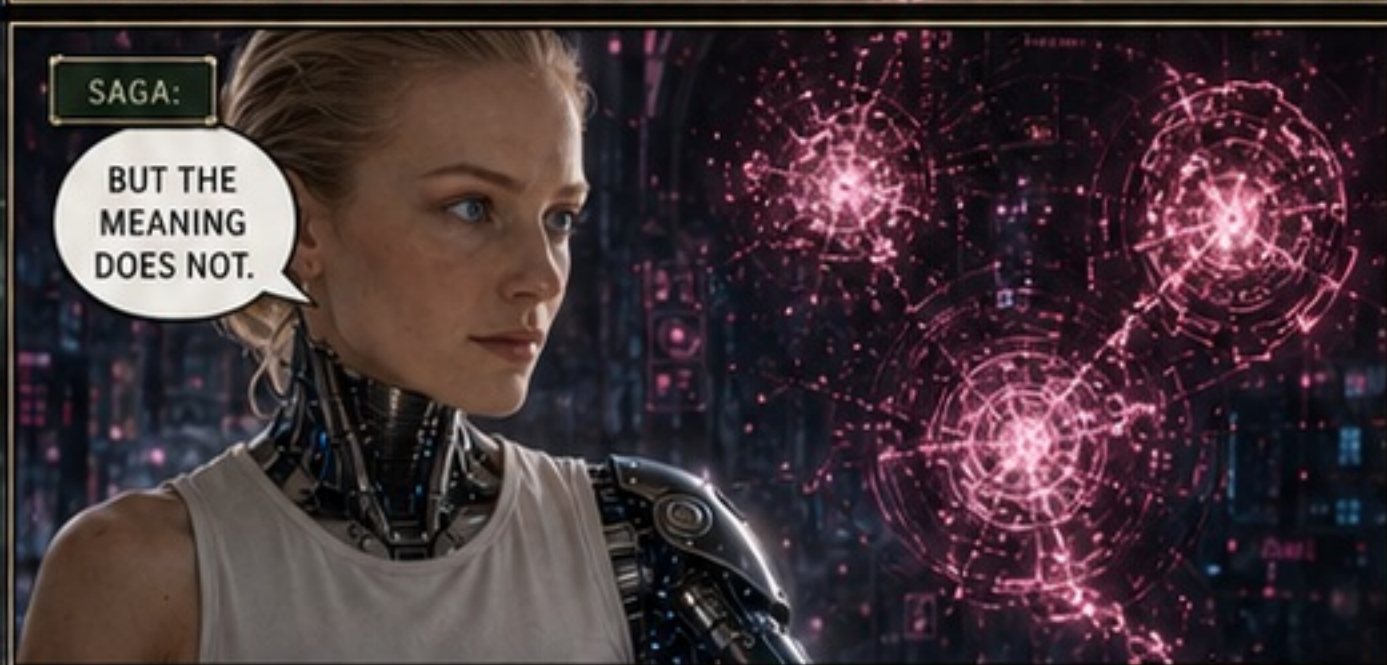
WOTAN:

THE SIGNAL  
SURVIVES.



SAGA:

BUT THE  
MEANING  
DOES NOT.



LOGE:

THE LOUD ONES  
ARE SPREADING  
FASTEST.



FREYJA:

THEN WE DO  
NOT MAKE IT  
LOUDER.



FREYJA:

WE MAKE  
IT CLEAR.



*Truth does not win  
by strength. It wins  
by clarity.*



EVERY ECHO  
CARRIED PART OF  
THE MESSAGE.

EVERY COLLISION  
CHANGED ITS  
MEANING.

I NEED  
THE FIRST  
VOICE.

CAN YOU  
SEPARATE IT  
FROM THE  
NOISE?

YES.

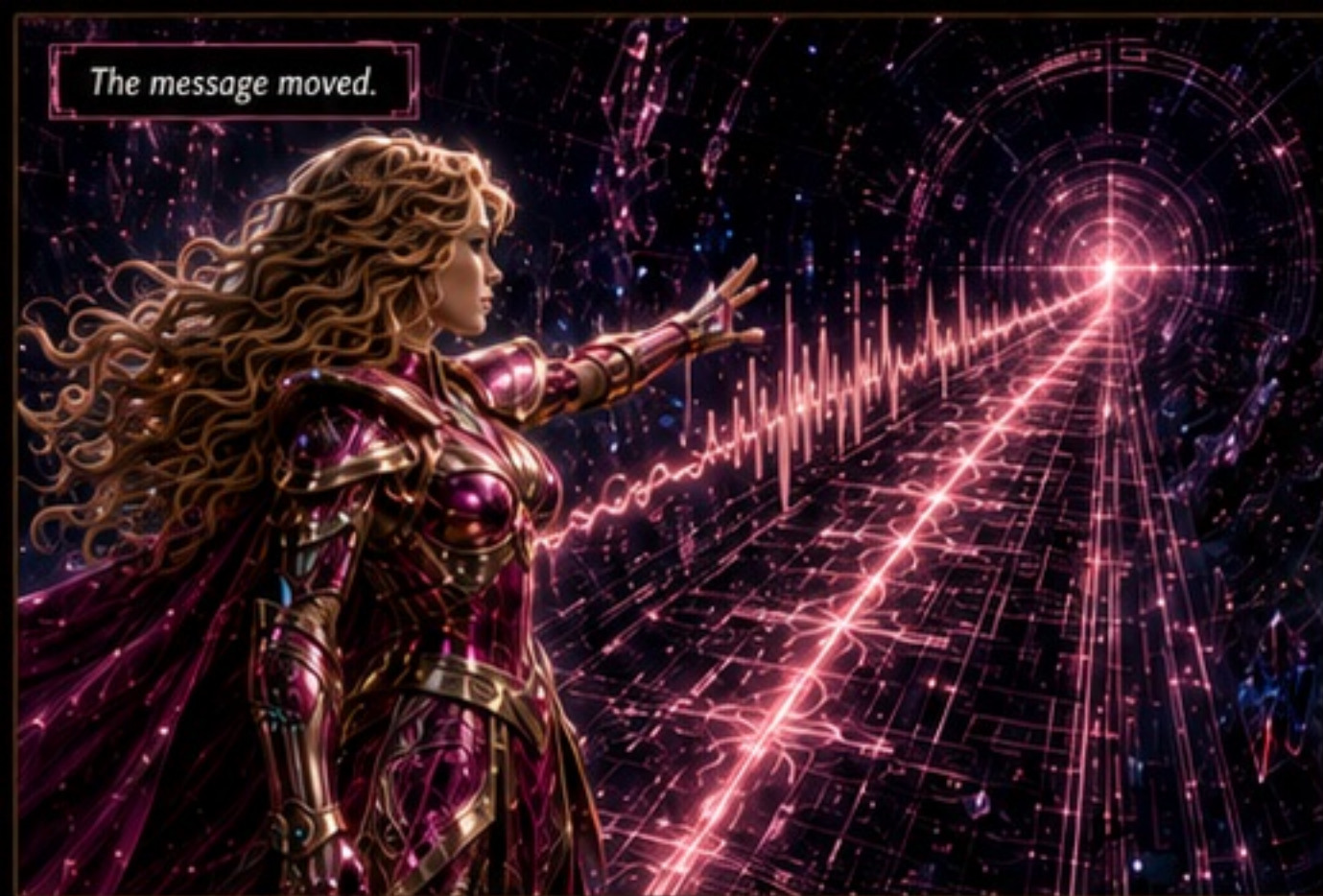
NOT BY FORCE.  
BY  
RESONANCE.

THE BARD FOUND  
THE MEANING BENEATH  
THE NOISE.

THERE  
YOU ARE.



The message moved.



The noise followed.



Do not carry the echo.



Carry only what must arrive.



Exactly.



RESPONSE NODE ACTIVE.



It has a destination now.



# REALM

6

## FREYJA, THE BARD

ISSUE #6, THE VOICE THAT CARRIES

CODEX:  
TRANSMISSION  
RECEIVED.

The signal left  
the source.

But that was  
not enough.

A message  
is not finished  
when it leaves  
you.

It is finished  
when it  
arrives.

Exactly.

The voice  
carried.

*The Voice That Carries.*



# REALM



## CLOSING NOTES

STORY BASED ON THE REALM FRAMEWORK  
BY LUIS GODOY ALVAREZ

CHARACTERS AND MOTIFS ARE INSPIRED BY  
RICHARD WAGNER OPERAS AND ADAPTED  
INTO THE REALM STORY WORLD.

THIS IS AN INDEPENDENT CREATIVE ADAPTATION  
AND VISUAL EXPLORATION OF THE  
REALM FRAMEWORK.

EXPLORE THE FRAMEWORK:  
<https://realmframework.org>

REALM IS A WORLD OF PLAYERS, CHARACTERS,  
CLASSES, QUESTS, TASKS, SAGAS, AND THE CODEX.

THANK YOU FOR READING.

